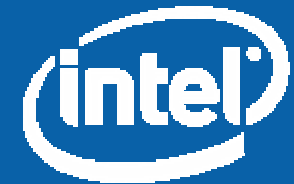


Mobility Enables

Telework, Disaster Preparedness,
And General Business Efficiency



Nigel Ballard
Intel America's

Telework Exchange Town Hall June 15th 2006

The Evolution of Mobility

Teleworking Yesterday:

A Computer and a POTS line



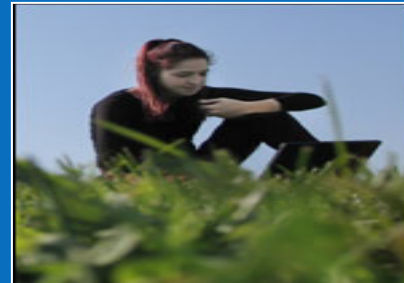
Teleworking Today:

A Laptop and Broadband Cable/DSL/Wi-Fi Hot Spot



Teleworking Tomorrow:

A Laptop and Wherever You happen to be



Enabling Wireless Technologies

WiMAX



CELLULAR DATA



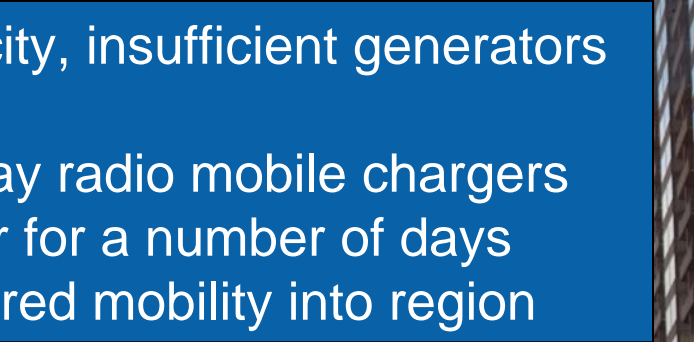
Wi-Fi MESH



Katrina 2005



No Electricity, insufficient generators
No POTS
No Two-way radio mobile chargers
No Cellular for a number of days
Intel delivered mobility into region



Mobility = Business Efficiency

A more efficient City saves \$\$\$

Less paper

Electronic permitting

Electronic meter reading

Fast deploy security cameras

A backup to existing comms.

Etc. Etc.



How do we keep our State and Federal agencies running when the US encounters any one of the following?

**Adverse Weather
A Mass Transit Strike
An Epidemic
Avian Bird Flu
A Dirty Bomb Detonation**



Federal Agencies are introducing 'COOP' AKA Disaster Preparedness.
But add the productivity gains of a Telework initiative with everyday benefits and a single hardware solution looks somewhat obvious...



A business-class laptop can be a true desktop replacement.
Use it every work day, connect from almost anywhere.
If disaster strikes you probably have it close at hand AND
you know how to use it!



Nigel Ballard
nigel.s.ballard@intel.com
(503) 329 7163

